

Original Article

Nomogram for pre-procedural prediction of non-curative endoscopic resection in patients with early gastric cancer

**So Young Han^{1*}, Hong Jin Yoon², Jie-Hyun Kim¹, Hye Sun Lee³, Jaeyoung Chun¹,
Young Hoon Youn¹, HyoJin Park¹**

¹Department of Internal Medicine, Gangnam Severance Hospital, Yonsei University College of Medicine, Seoul, Korea

²Department of Internal Medicine, Soonchunhyang University College of Medicine, 31 Suncheonhyang 6-gil, Dongnam-gu, Cheonan, Republic of Korea

³Biostatistics Collaboration Unit, Yonsei University College of Medicine, Seoul, Korea

Short running head: Nomogram for prediction of non-CR

Correspondence to: Jie-Hyun Kim, MD, PhD

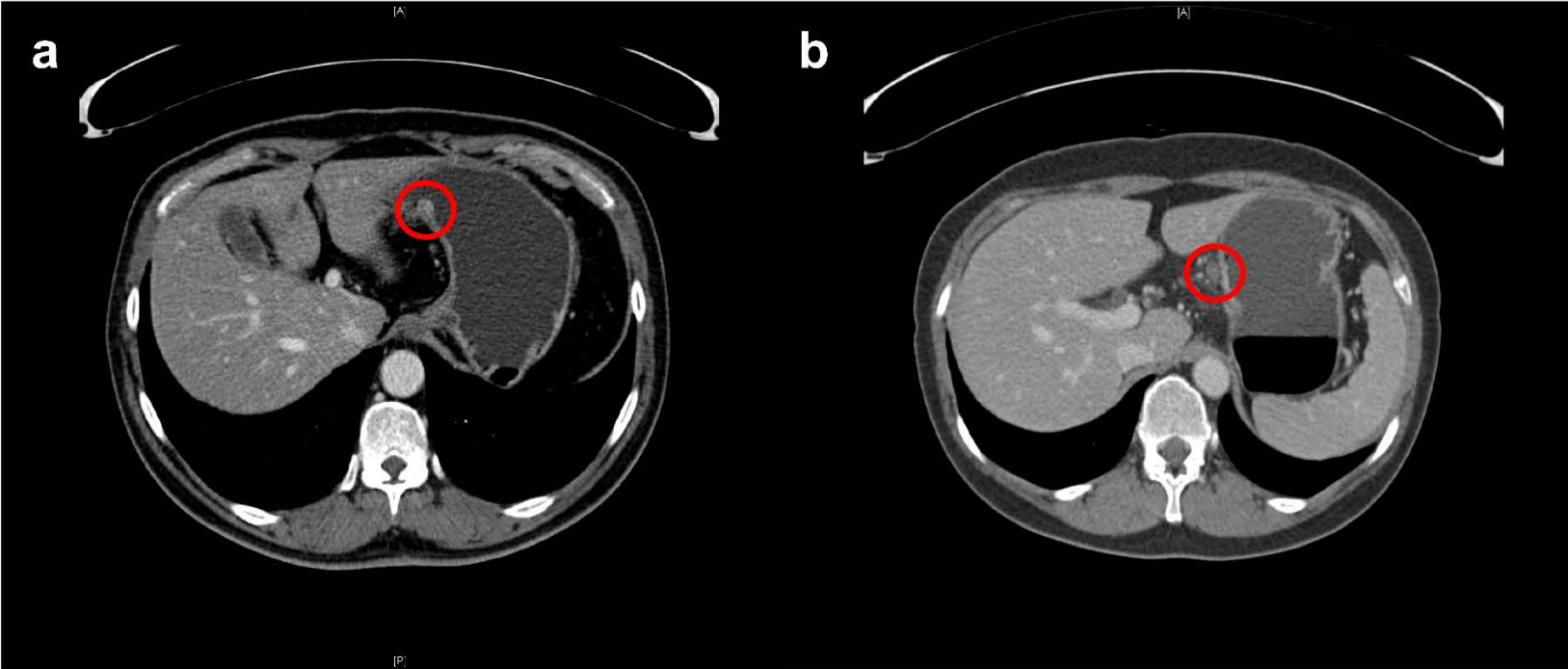
Address: Department of Internal Medicine, Gangnam Severance Hospital, Yonsei University College of Medicine, 211 Eonjuro, Gangnam-gu, Seoul, Korea, 135-720

Phone: 82-2-2019-3505

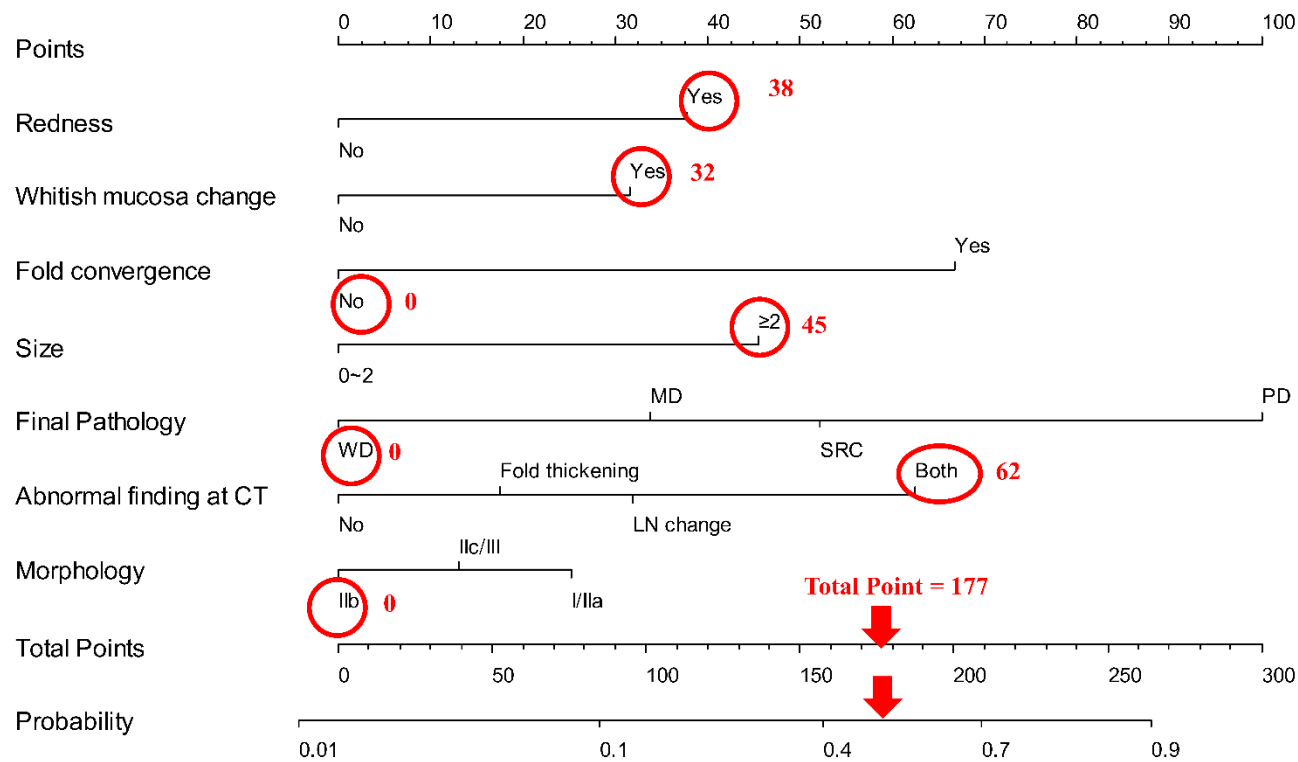
Fax: 82-2-3463-3882

E-mail: otilia94@yuhs.ac

Supplementary Fig 1. Abnormal CT findings of the early gastric cancer: **a** Fold thickening; **b** Non-specific lymph node enlargement

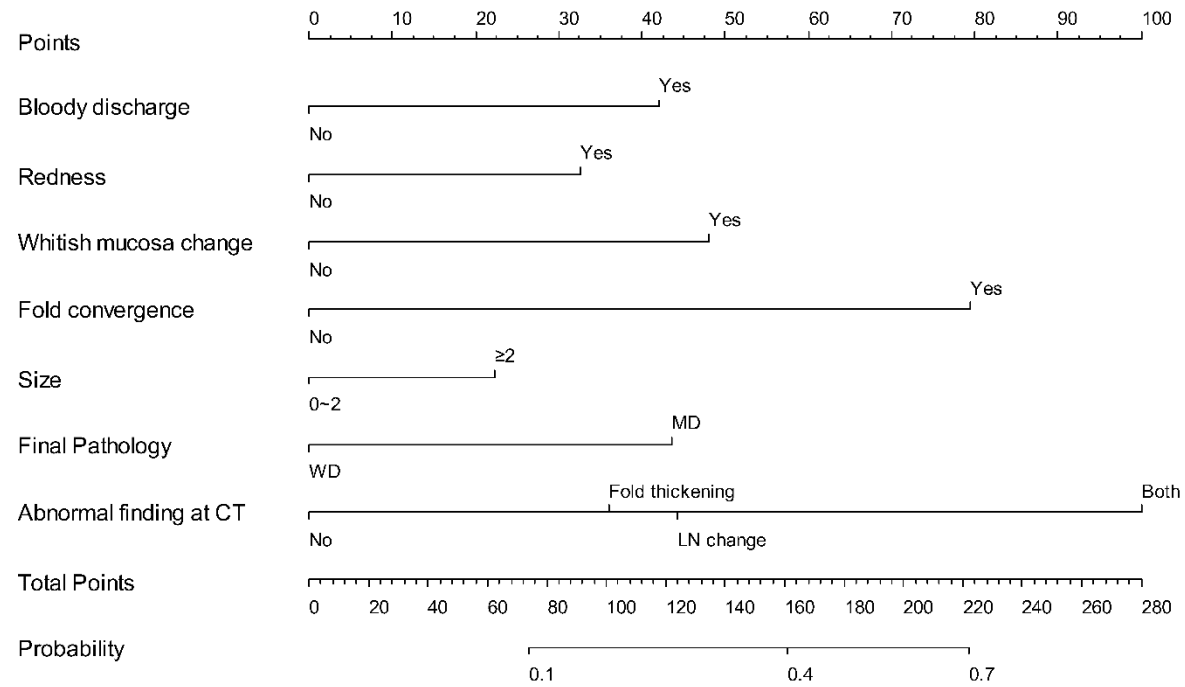


Supplementary Figure 2. Real-world example of nomogram use : A real-world application of the nomogram is depicted herein. Each variable was assessed, and the predicted probability of non-CR was calculated using our model. The patient’s post-ESD pathologic report revealed non-CR due to vertical margin involvement and lymphovascular invasion.



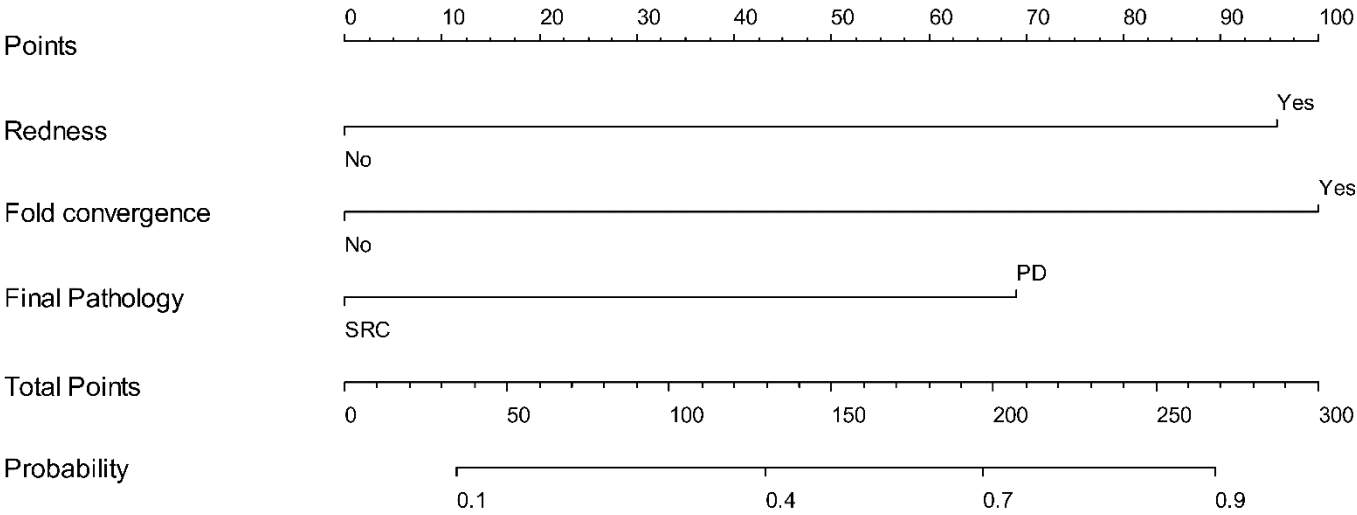
Abbreviations: *WD* well-differentiated; *MD* moderately differentiated; *SRC* signet ring cell carcinoma; *PD* poorly differentiated; *CT* computed tomography; *LN* lymph node

Supplementary Figure 3. Nomogram predicting the risk of non-curative resection in differentiated-type histology



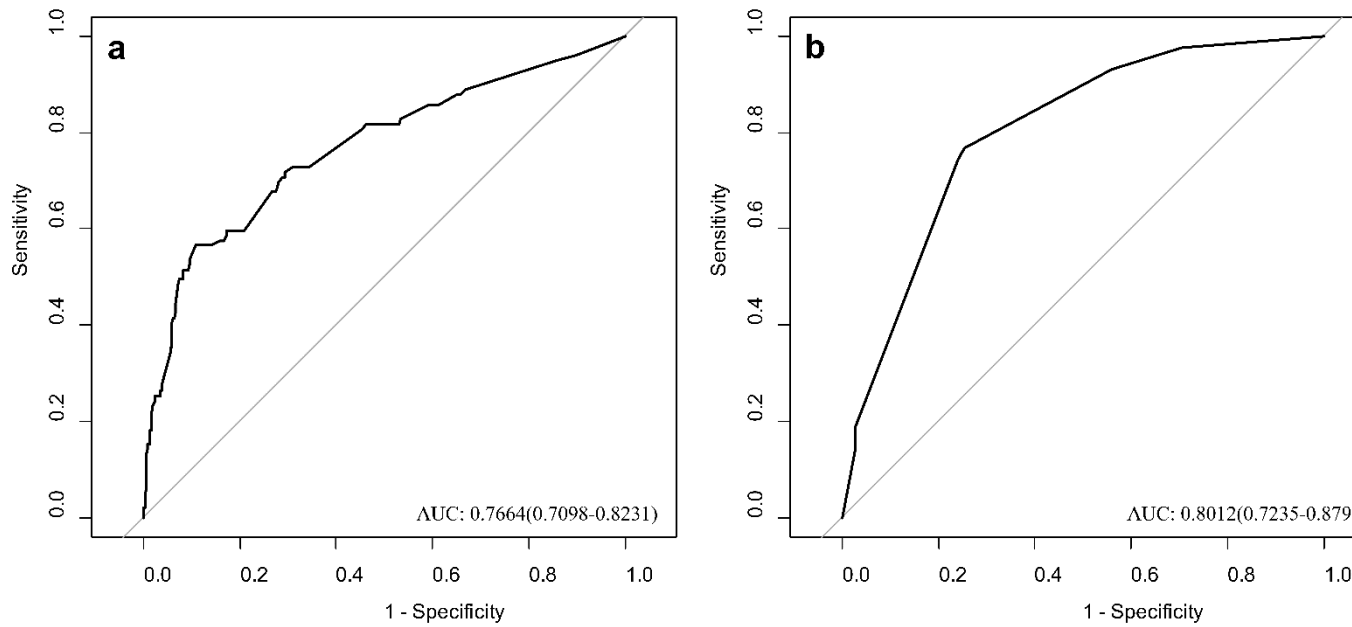
Abbreviations: *WD*, well-differentiated; *MD*, moderately differentiated; *CT* computed tomography; *LN* lymph node

Supplementary Figure 4. Nomogram predicting the risk of non-curative resection in undifferentiated-type histology



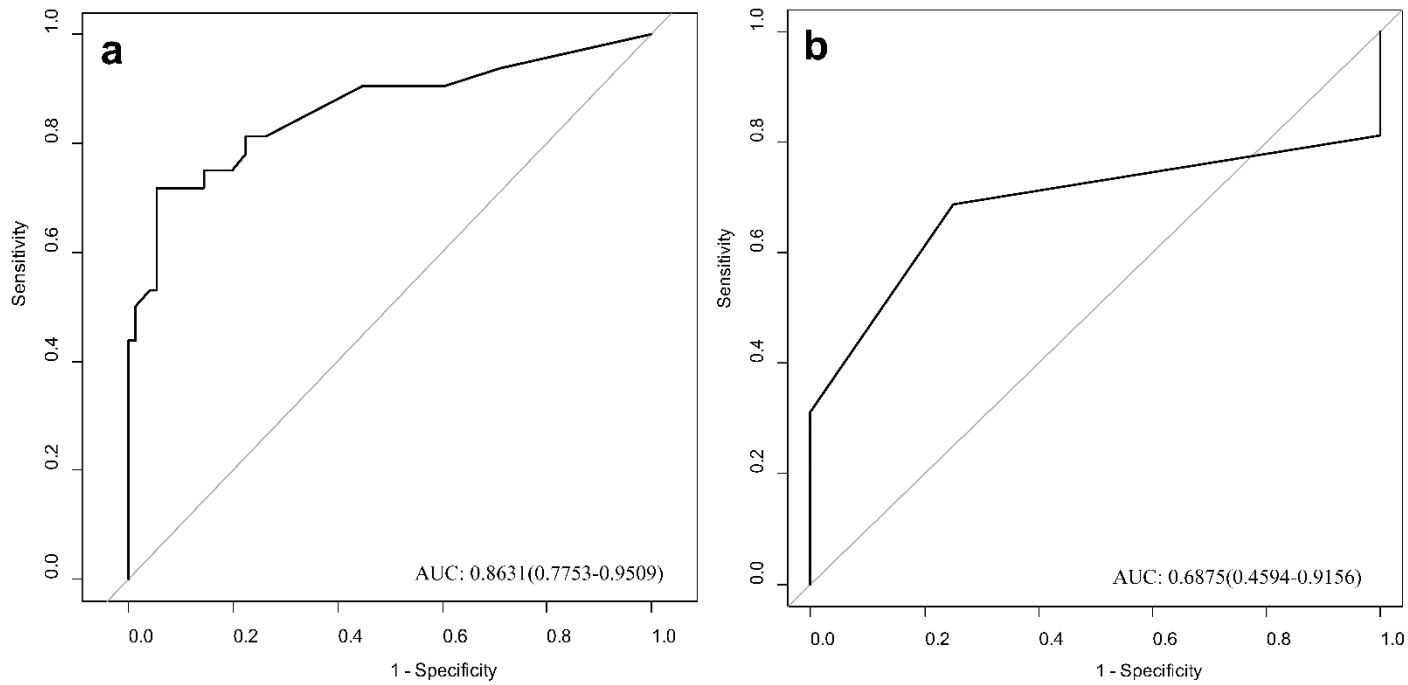
Abbreviations: *SRC* signet ring cell carcinoma; *PD* poorly differentiated

Supplementary Figure 5. Receiver operating characteristic (ROC) curves of differentiated- and undifferentiated-type histology in the development set: **a** Receiver operating characteristics (ROC) curve of the differentiated-type histology; **b** Receiver operating characteristics (ROC) curve of the undifferentiated-type histology



Abbreviation: *AUC* area under the curve

Supplementary Figure 6. Receiver operating characteristic (ROC) curves of differentiated- and undifferentiated-type histology in the external validation set: **a** Receiver operating characteristics (ROC) curve of the differentiated-type histology; **b** Receiver operating characteristics (ROC) curve of the undifferentiated-type histology



Abbreviation: *AUC* area under the curve