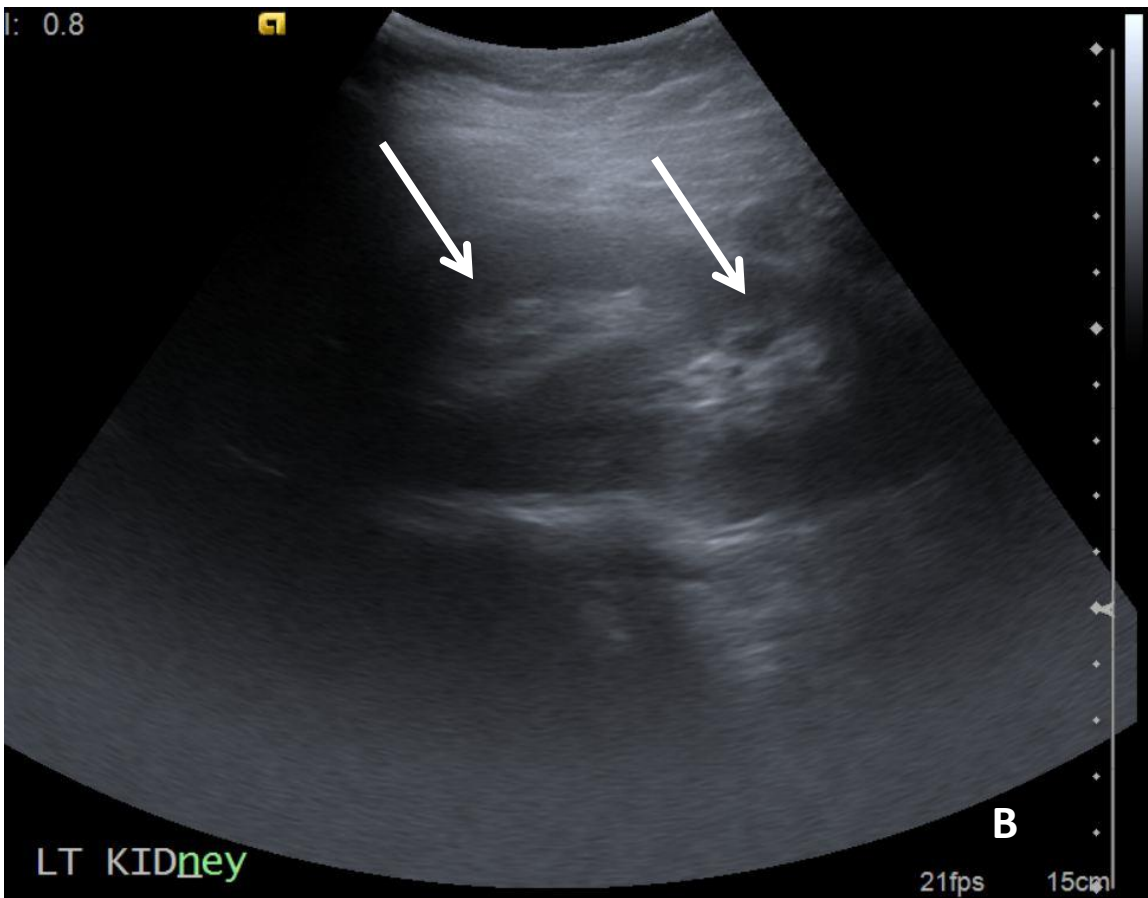
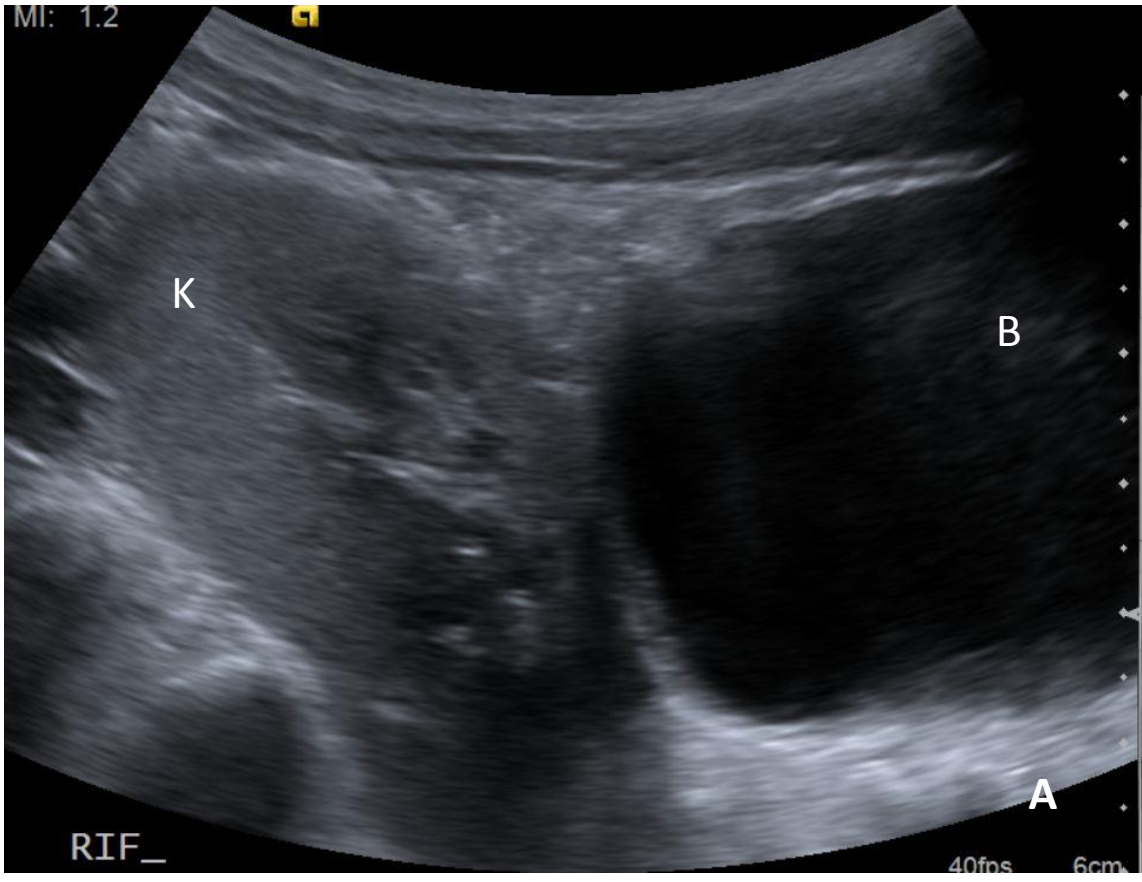
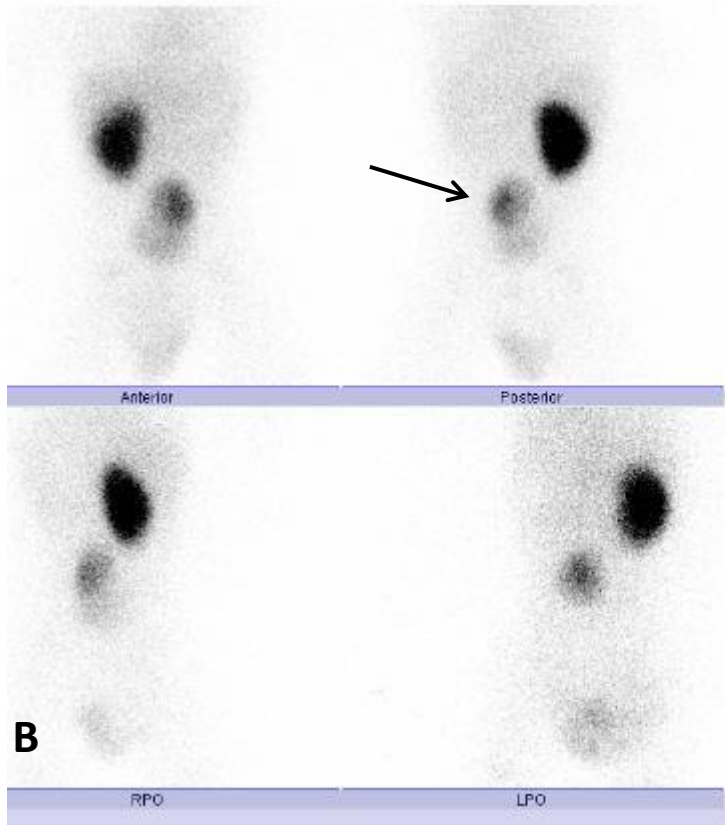
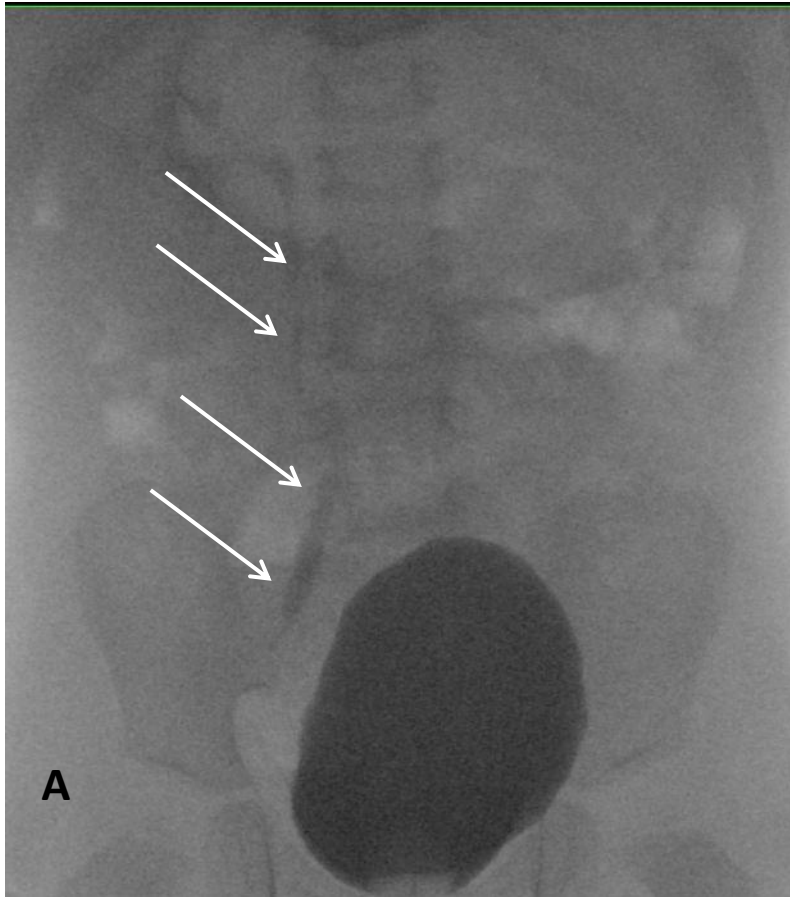


Supplemental Figure 1

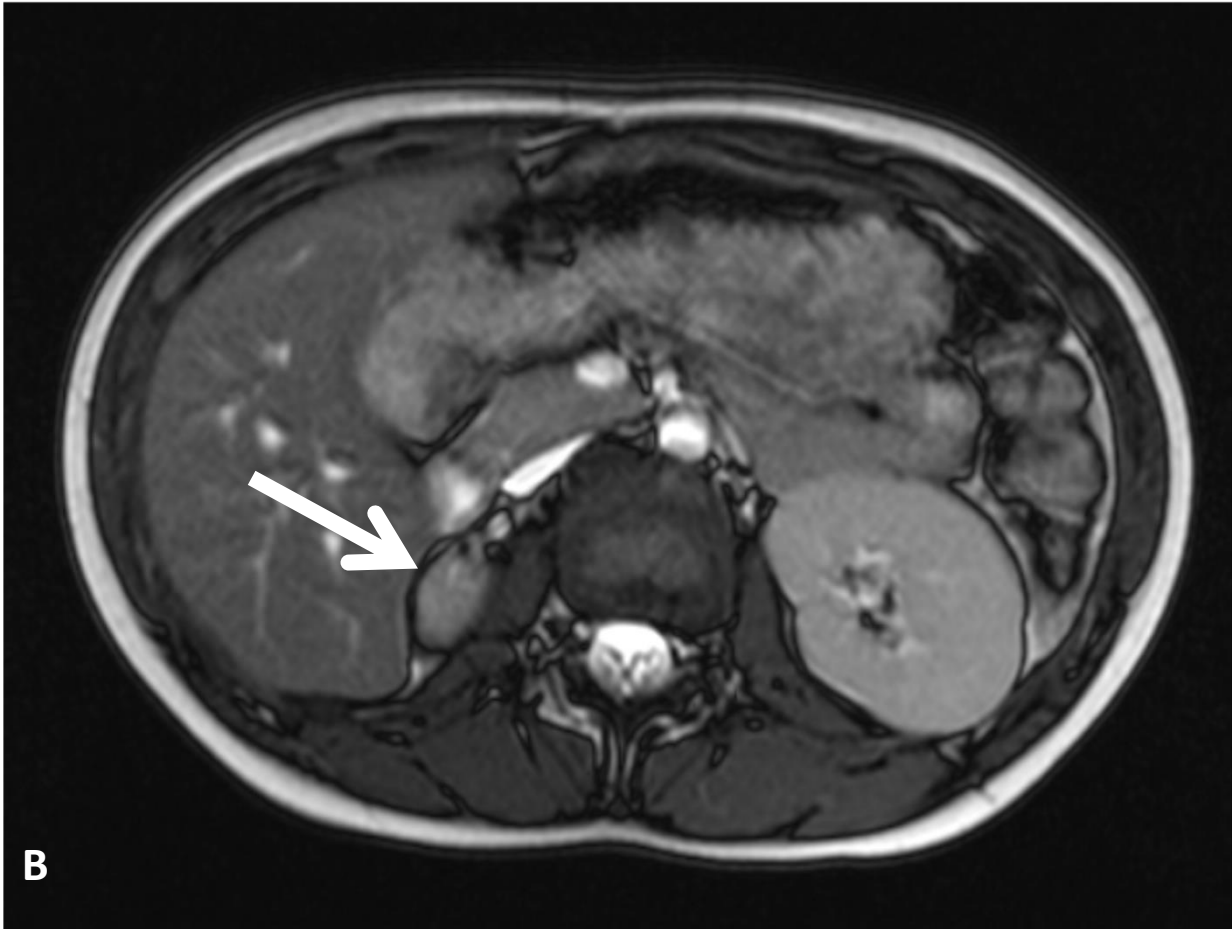
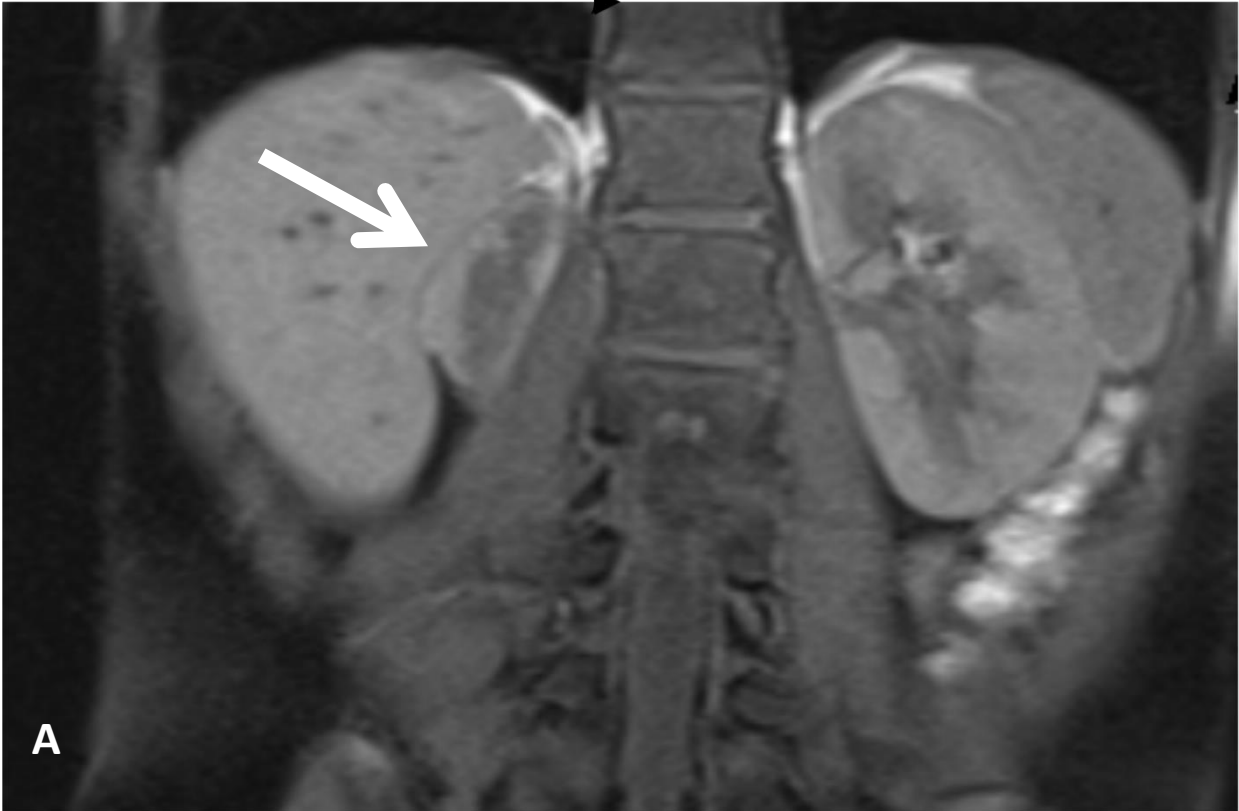


Supplemental Figure 2

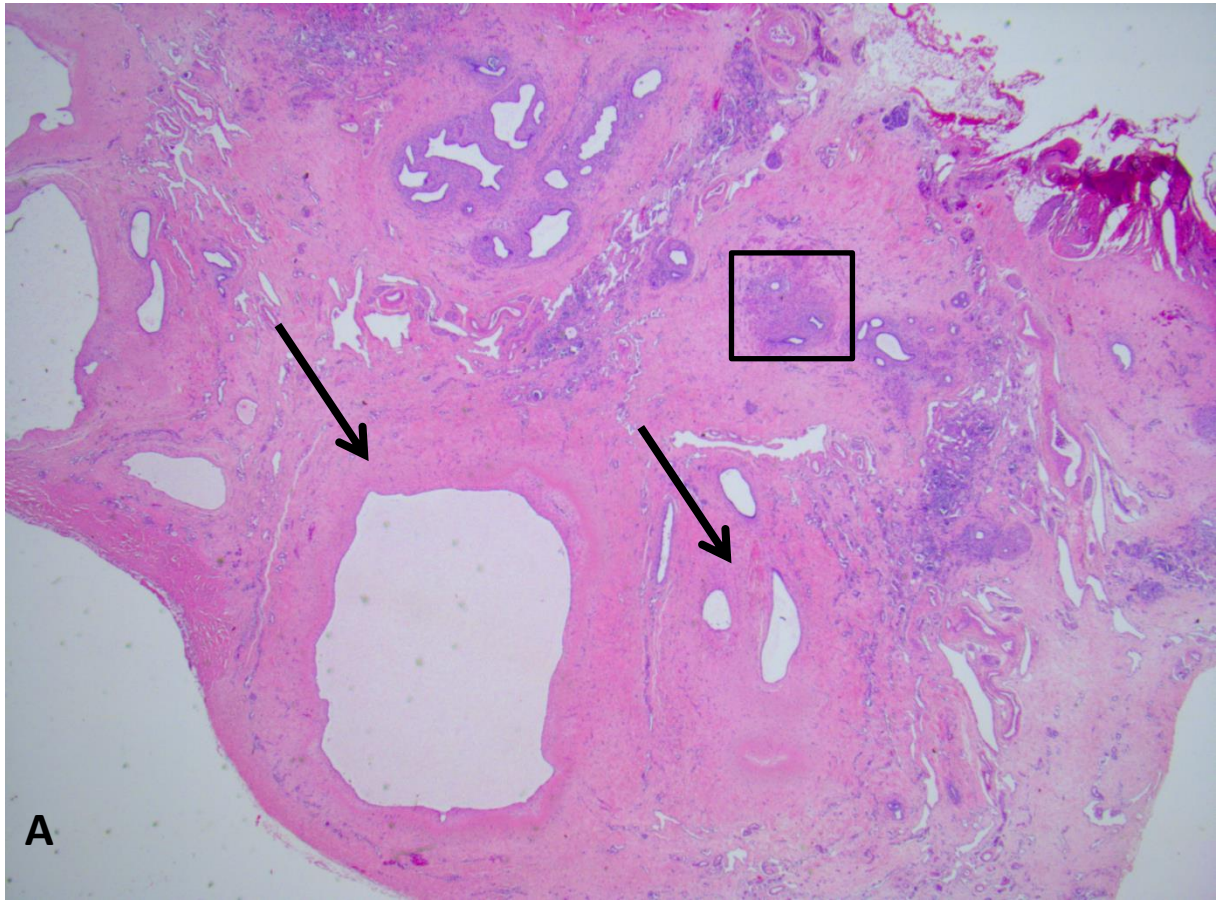


(Counts)	Geometric Mean	
	Left D10K	Right D49K
Total	D10K	D49K
(% Ratios)	Left	Right
Total	16.65	83.35

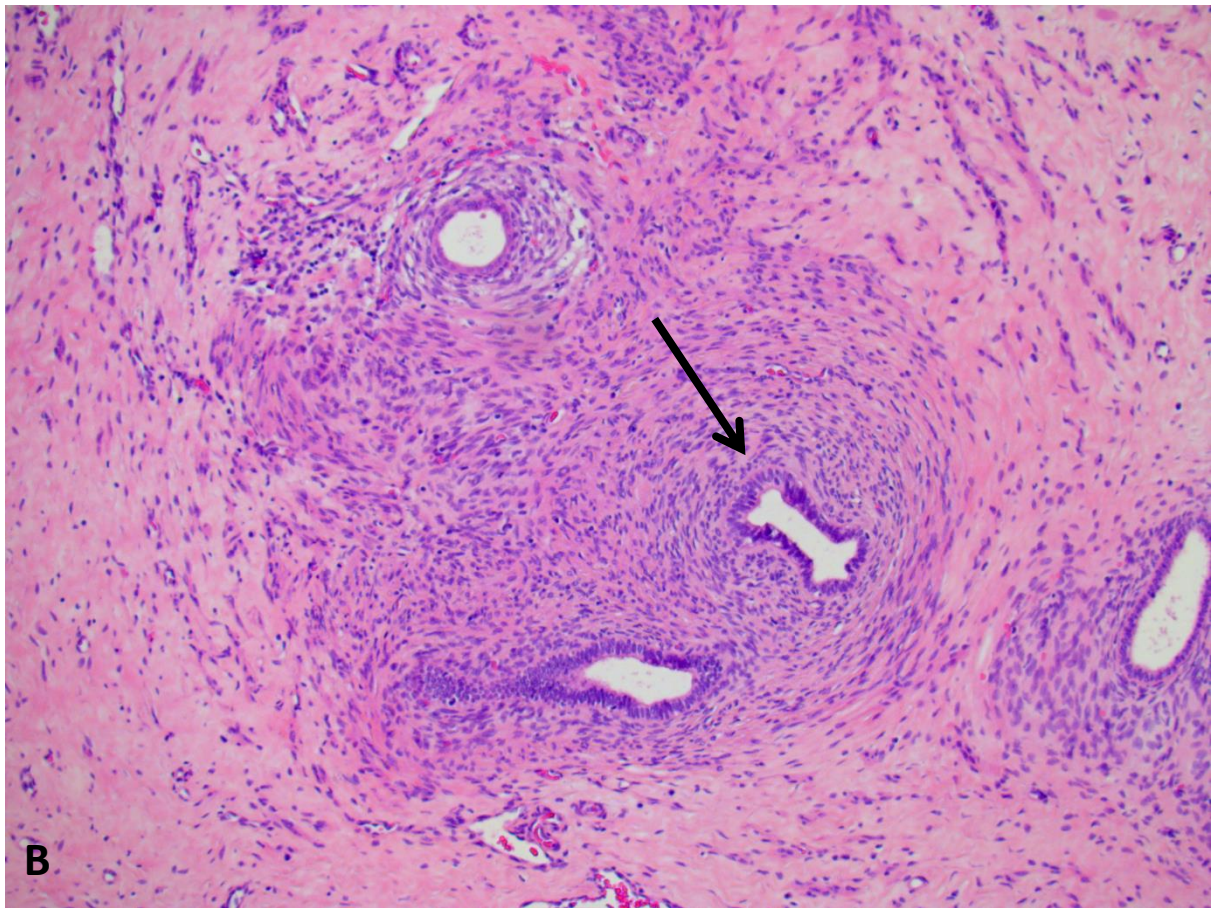
Supplemental Figure 3



Supplemental Figure 4



A



B

Figure legends to supplemental figures:

Supplemental Figure 1: Ultrasound findings in individuals with Fanconi anaemia .

A: Pelvic kidney (K) in close proximity to the filled Bladder (B). **B:** Fused ectopic Kidney with two collecting systems (arrows).

Supplemental Figure 2: **A:** Micturating cysto-urethrogram (MCUG) demonstrating vesico-ureteral reflux (arrows) in a patient with FA. **B.** DMSA scan showing decreased uptake and therefore impaired function of an ectopic dysplastic kidney.

Supplemental Figure 3: **A:** Coronal T1 FS sequence shows an atrophic right side kidney marked (arrow). Normal size left kidney B: Axial T1 sequence. Small kidney diameter (arrow) of left dysplastic kidney.

Supplemental Figure 4: Histology of dysplastic kidney associated with FA **A:** Complete disorganisation of the renal parenchyma with extensive fibrosis (x40) . **B:** Dysplastic tubules are cuffed by primitive mesenchyme (x100), and several are cystically dilated (arrows).