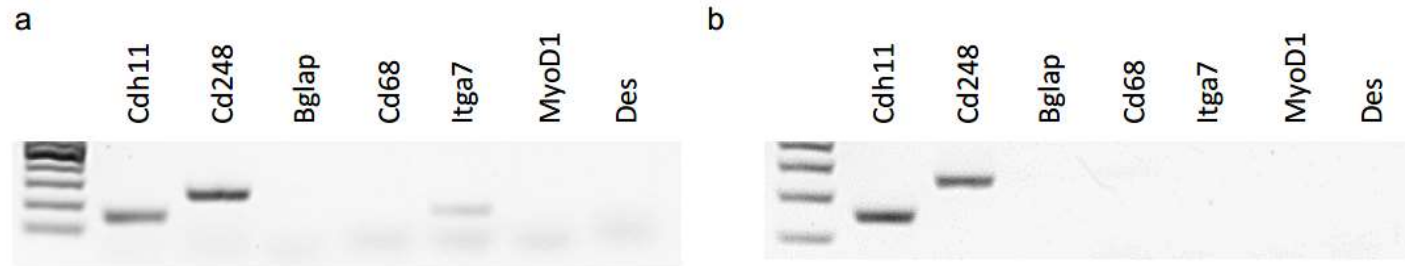


**Supplemental Figure 1** Analysis of expression of fibroblast specific genes (*Cdh11*, *Cd248*) and absence of marker genes for osteoblasts, macrophages, osteoclasts and myogenic cells (*Bglap*, *Cd68*, *Itga7*, *MyoD1*, *Des*) in primary cell cultures of knee synovial tissue explants (a) as well as TMJ-dissected synovial tissue (b)

**Ergänzende Abbildung 1** Analyse der Expression von Fibroblasten-spezifischen Genen (*Cdh11*, *Cd248*) und Abwesenheit von Markergenen für Osteoblasten, Makrophagen, Osteoklasten und myogene Zellen (*Bglap*, *Cd68*, *Itga7*, *MyoD1*, *Des*) in primären Zellkulturen von Knie-(a) sowie von TMJ-synovialen Gewebe (b)



**Supplemental Table 1** Primers used for semiquantitative PCR analysis in murine synovial fibroblasts**Ergänzende Tabelle 1** Verwendete Primer für die semiquantitative PCR-Analyse in murinen synovialen Fibroblasten

Gene symbol	Gene name	5'-forward primer-3'	5'-reverse primer-3'	Genebank accession number	Amplicon size, T <sub>m</sub> , GC%
<i>Cdh11</i>	cadherin 11 [54]	AGGACGACACAGCCAATGGAC	AAGTCCTGCTTCTGCCGACTG	NM_009866.5	148 bp, 62°C, 57
<i>Cd248</i>	CD248 antigen, endosialin [26]	GCCAGCAGATGTGTGTCAA	GTAGGTGCCAGCCATAGGAT	NM_054042.2	238 bp, 58°C, 52-55
<i>Bglap</i>	bone gamma-carboxyglutamate protein [26]	GCTCTGTCTCTGACCTCACA	TAGATGCGTTTGTAGGCGG	NM_007541.3	231 bp, 61°C, 54-52
<i>Cd68</i>	CD68 antigen [26]	GCTTCTGCTGTGGAAATGC	GGTAGGTTGATTGTCGTCTGC	NM_001291058.1	234 bp, 59°C, 52
<i>Itga7</i>	integrin alpha 7	TTTGGGTTCTGTGACAGGGC	AGCTGGTCAGGGTCTGAGCTATC	NM_008398.2	137 bp, 63°C, 57-56
<i>MyoD1</i>	myogenic differentiation 1	ACTACAGTGGCGACTCAGATGC	GTGTCGTAGCCATTCTGCCG	NM_010866.2	109 bp, 62°C, 54-60
<i>Des</i>	desmin	AACTCCGAGAAACCAGCCCC	GTTGCTGTGAGCCTCGCTG	NM_010043.2	118 bp, 62°C, 57-60