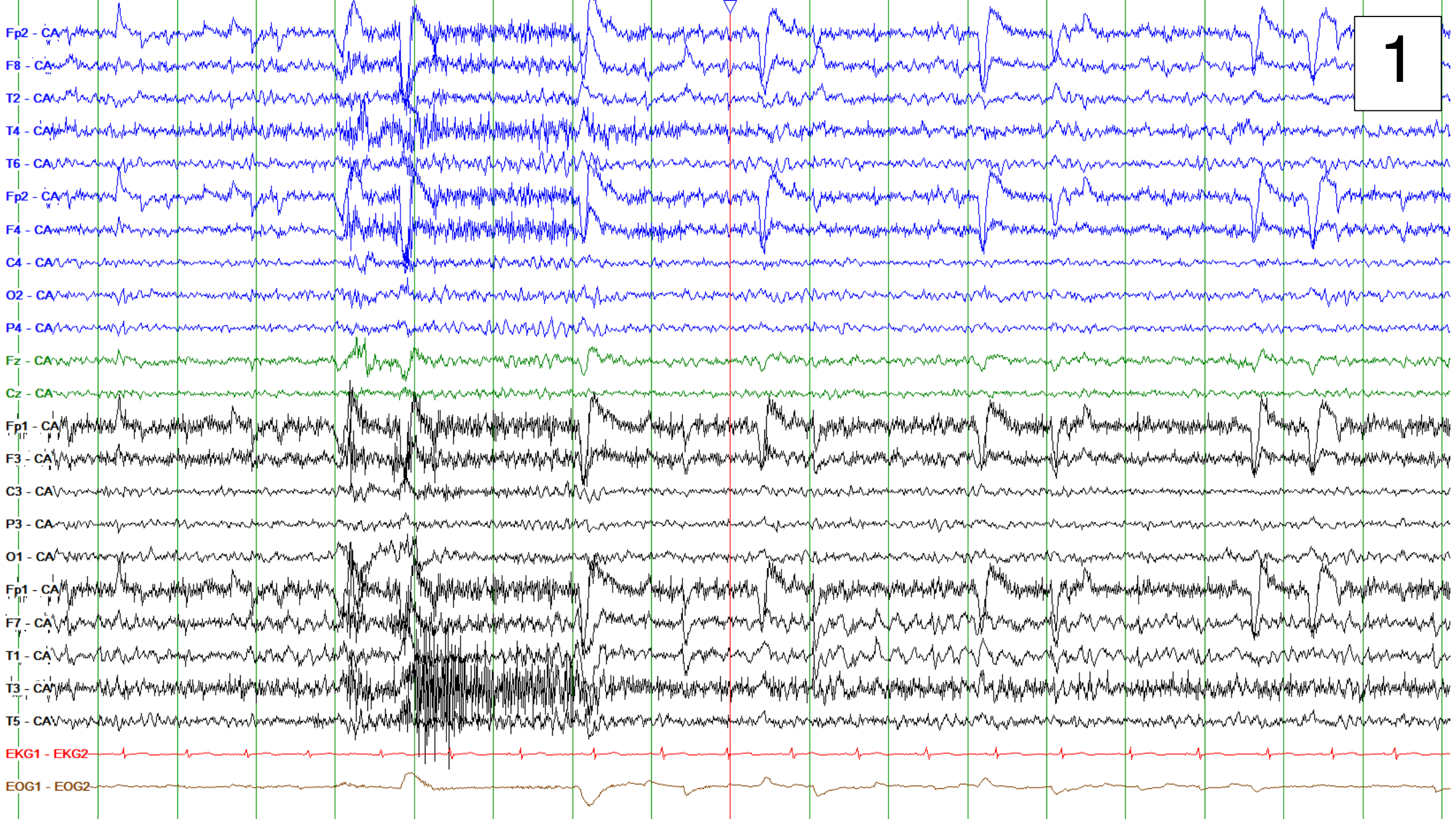


Breath-hold-triggered BOLD fMRI in drug-resistant non-lesional focal epilepsy – a pilot study.

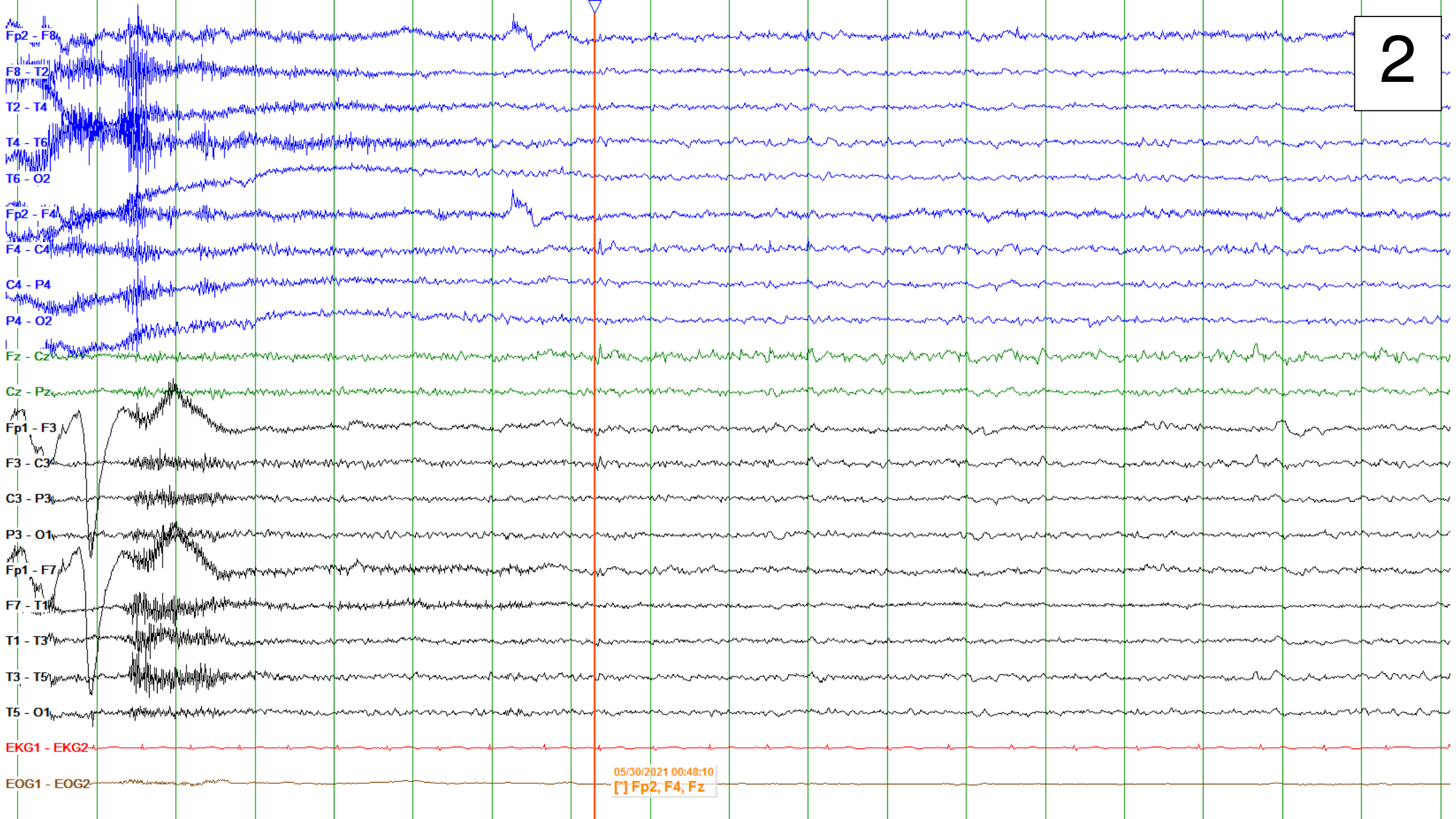
Supplementary Information

Representative interictal and ictal EEG recordings of the study participants. Traces are shown as longitudinal bipolar and/or common average referential montages with frequency filters of LFF 1 Hz and HFF 70 Hz, no notch filter, timebase 30 mm/s, and sensitivity $7\mu\text{v}/\text{mm}$, unless stated otherwise

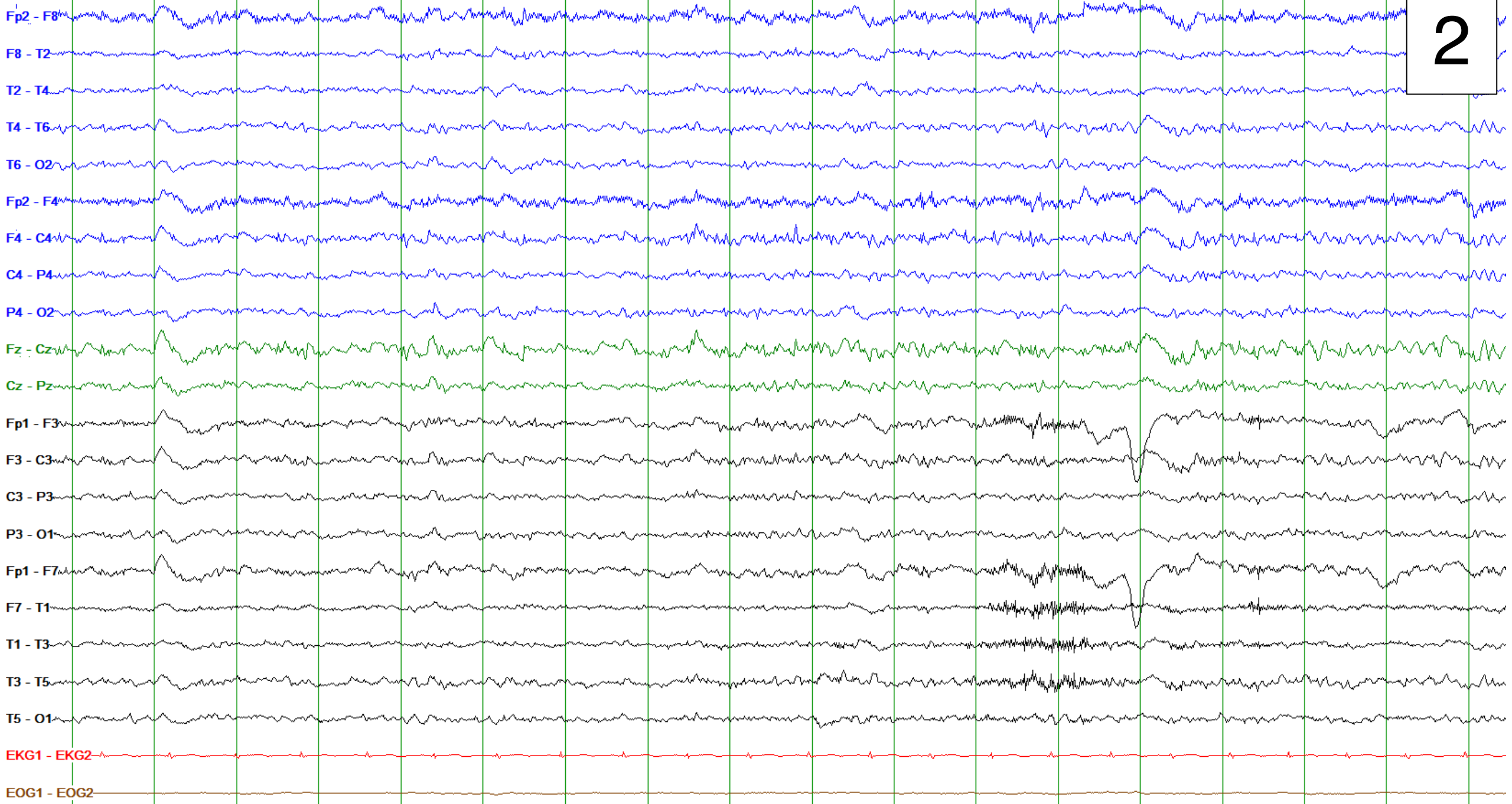
1

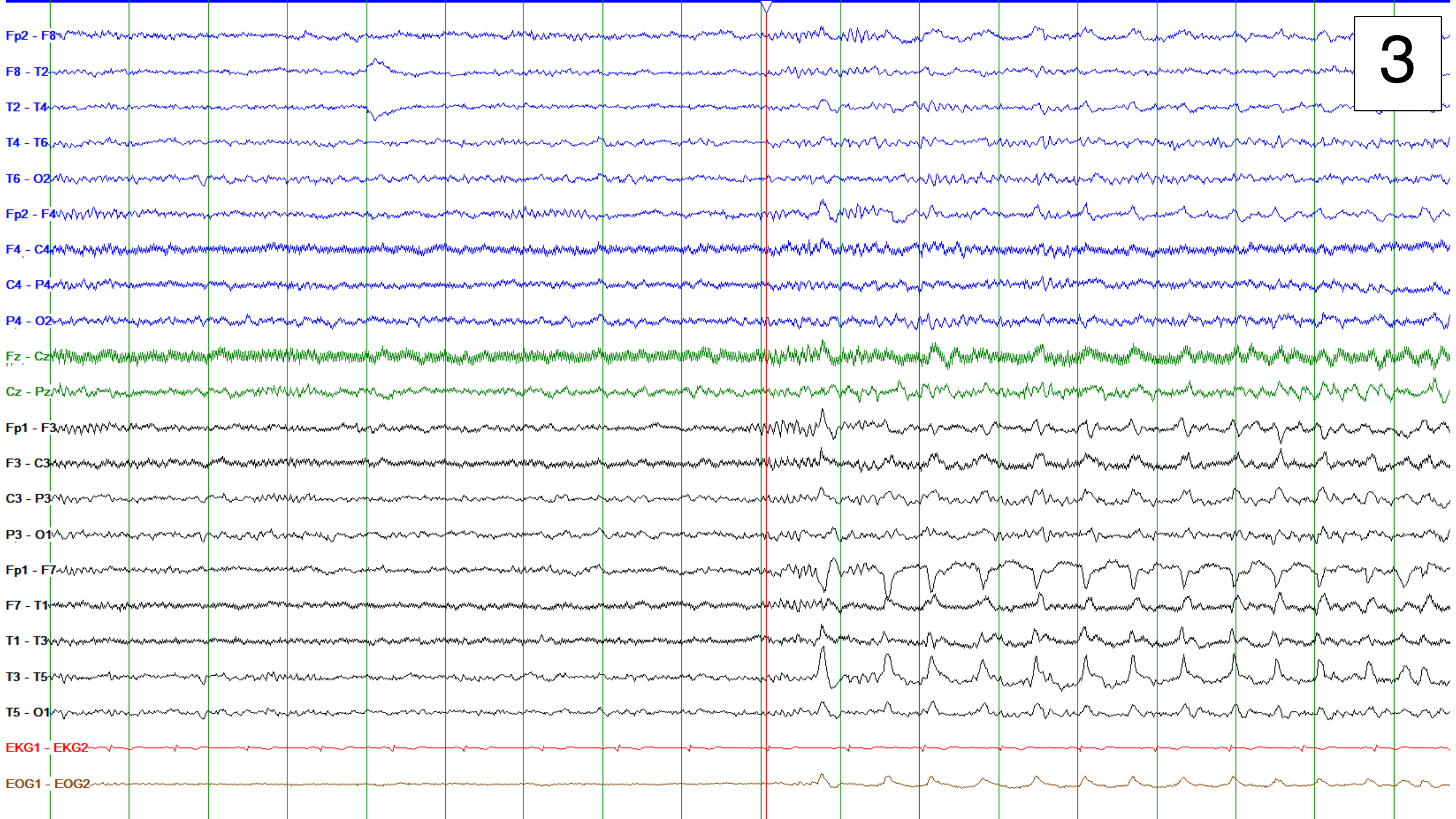


2

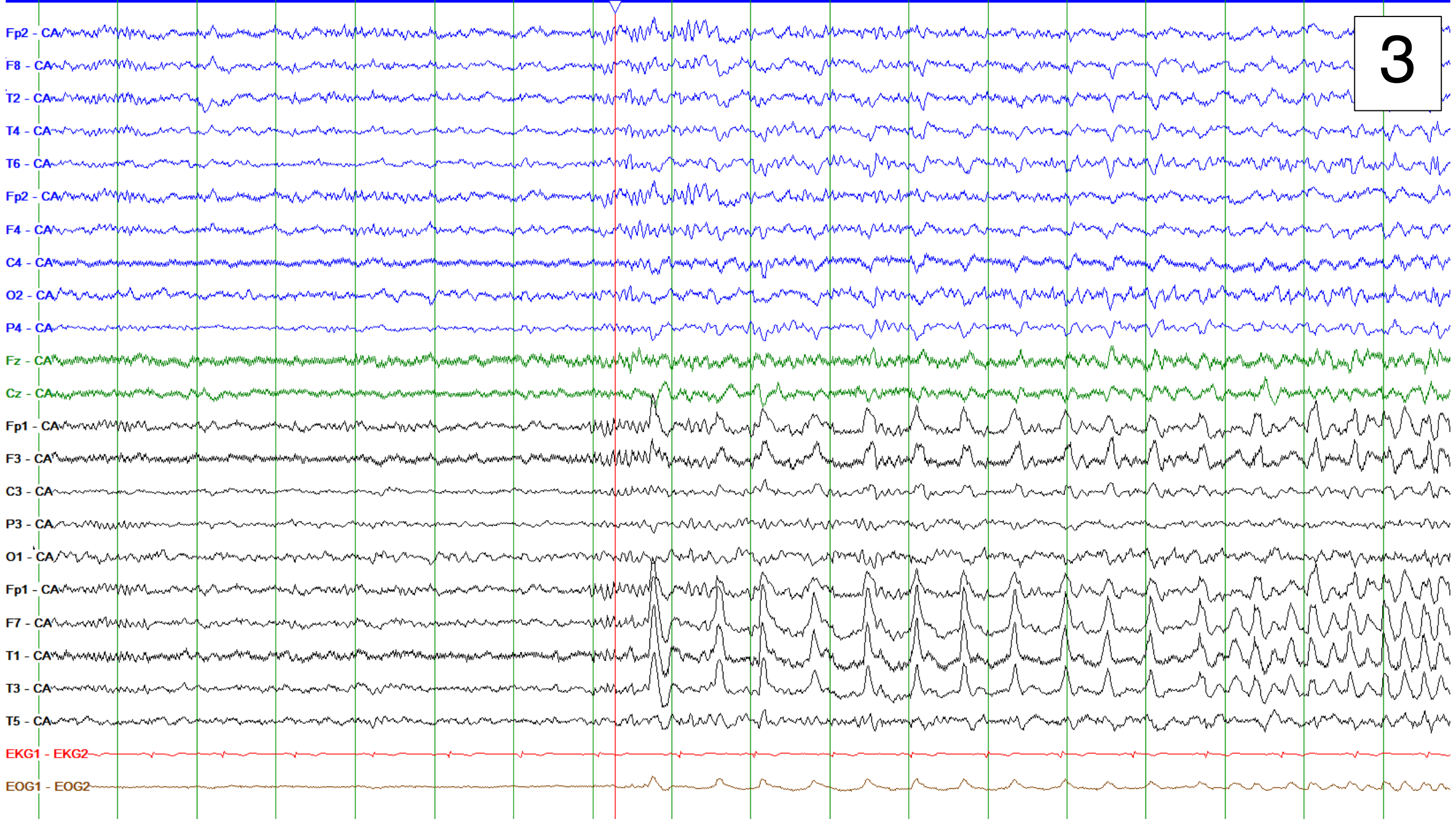


2





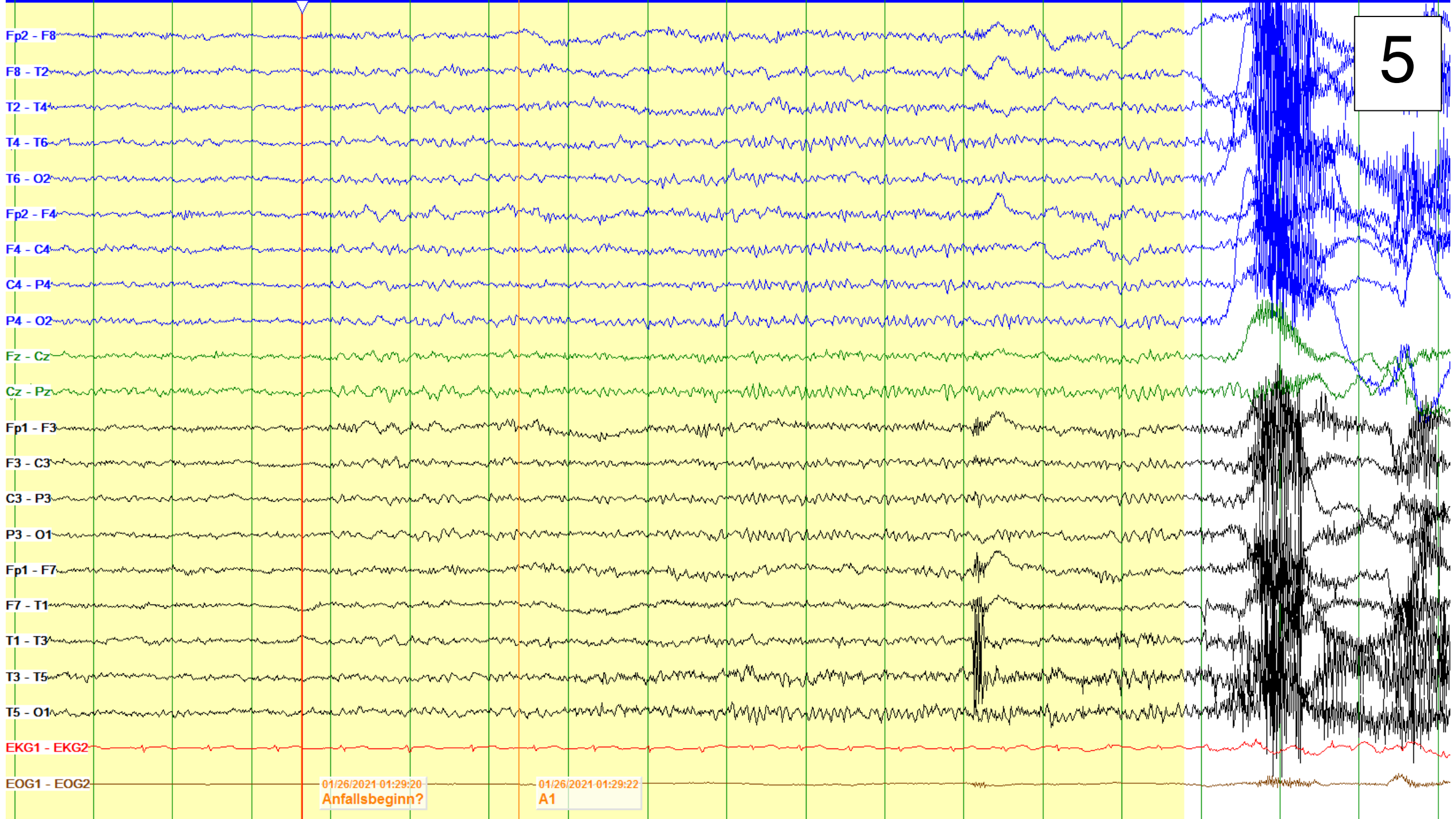
3



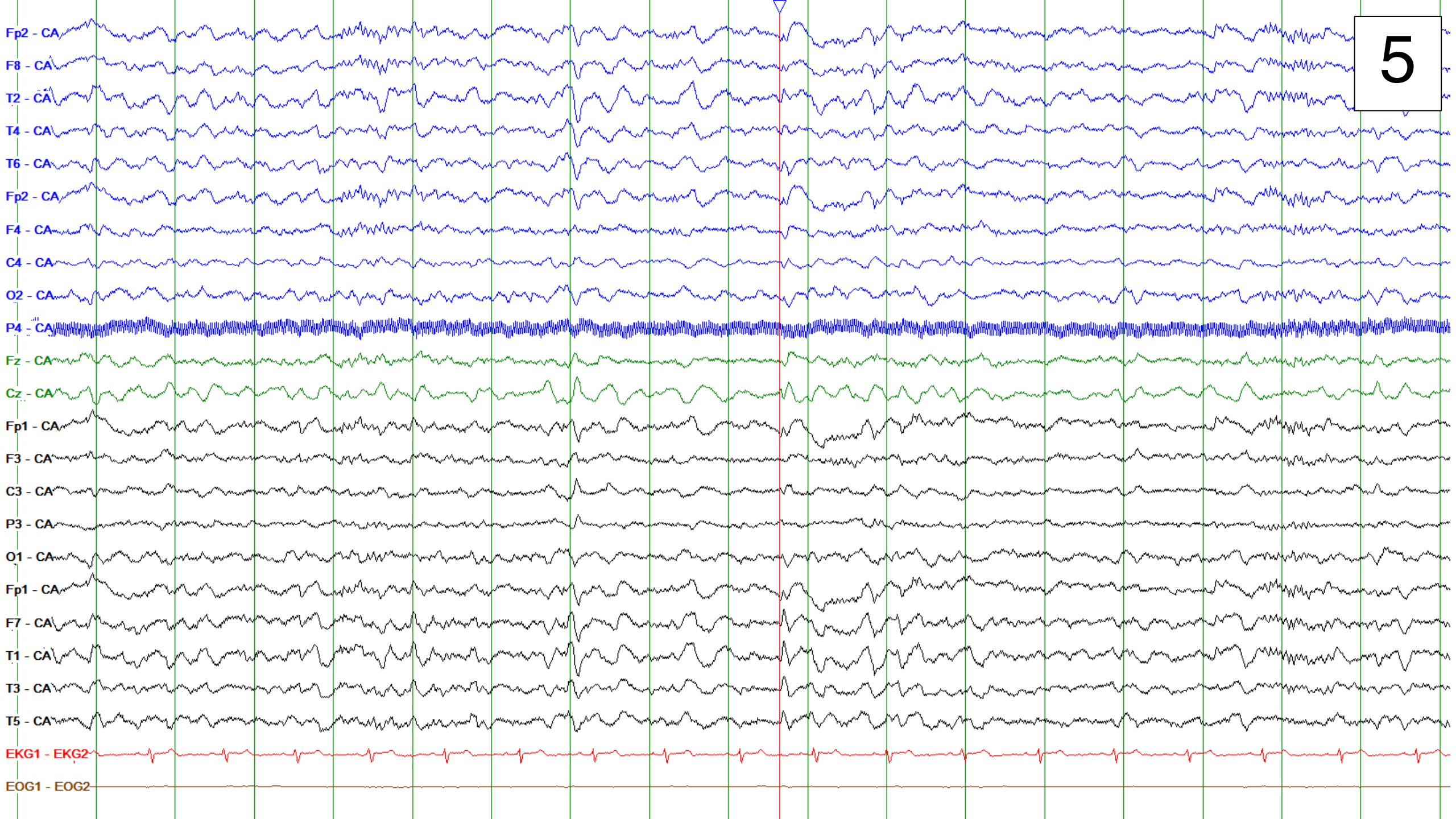


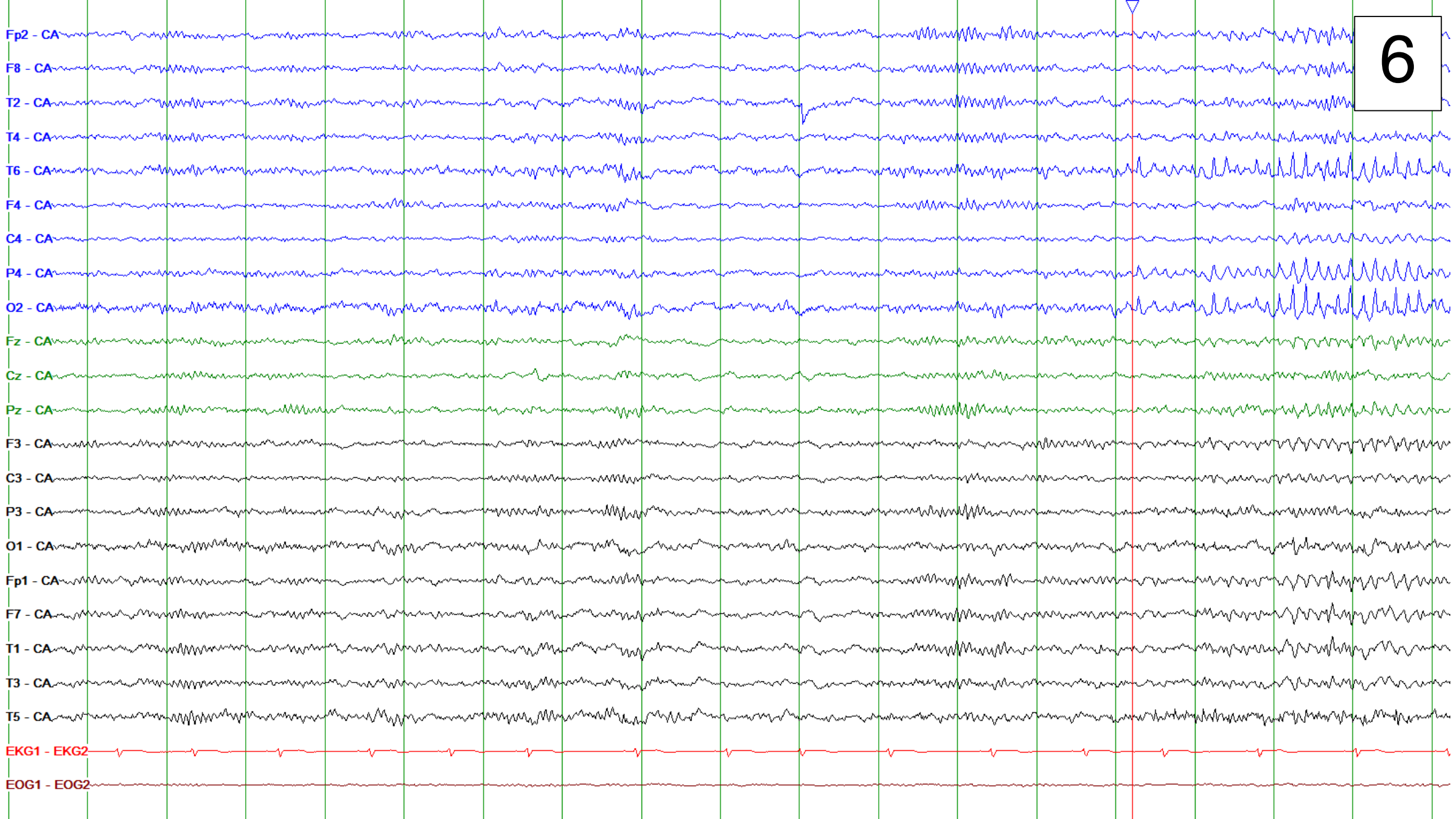
LFF 1 Hz, HFF 30 Hz, notch 50 Hz, sensitivity 10 μ v/mm, timebase 15 mm/s

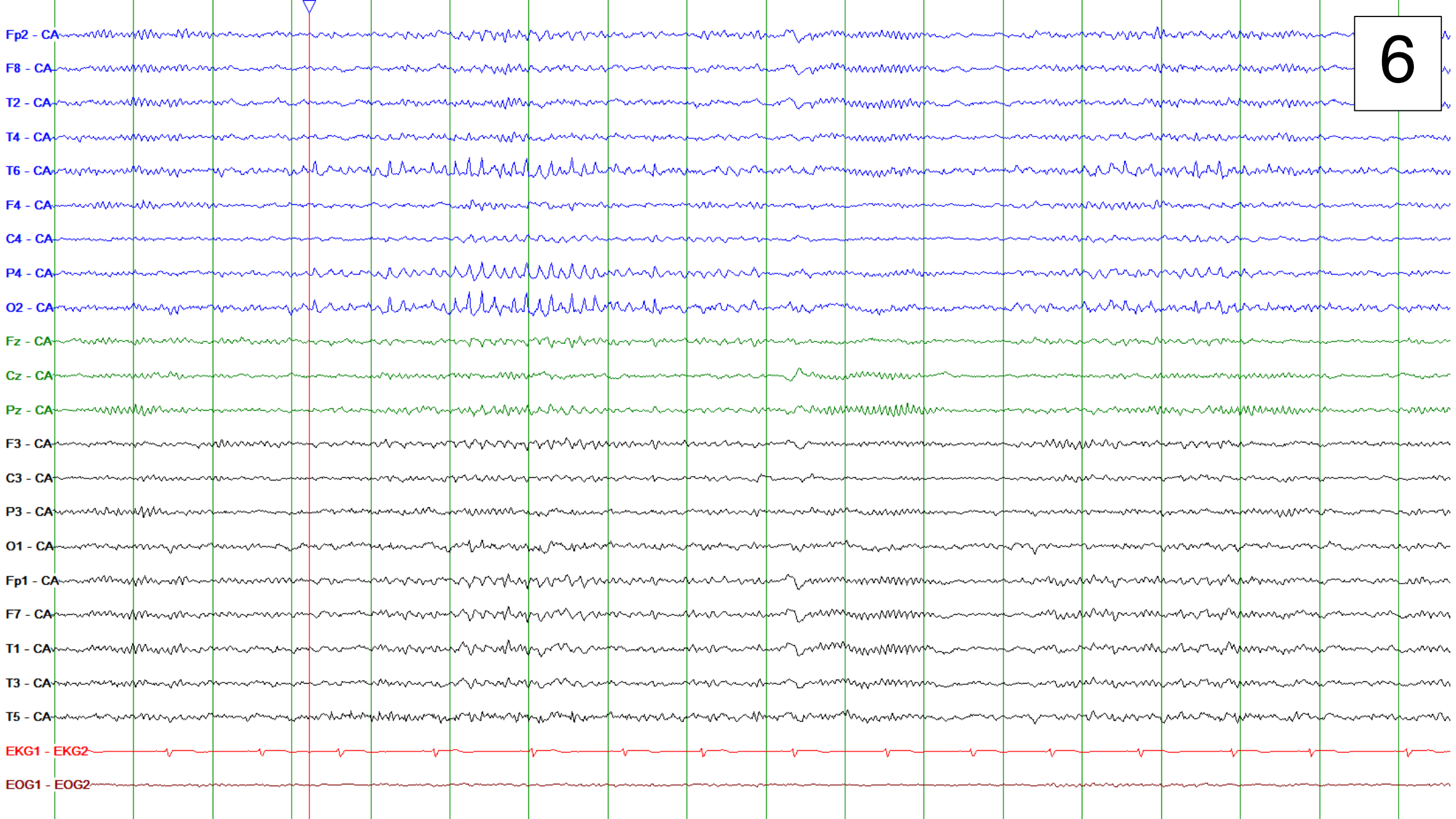
5



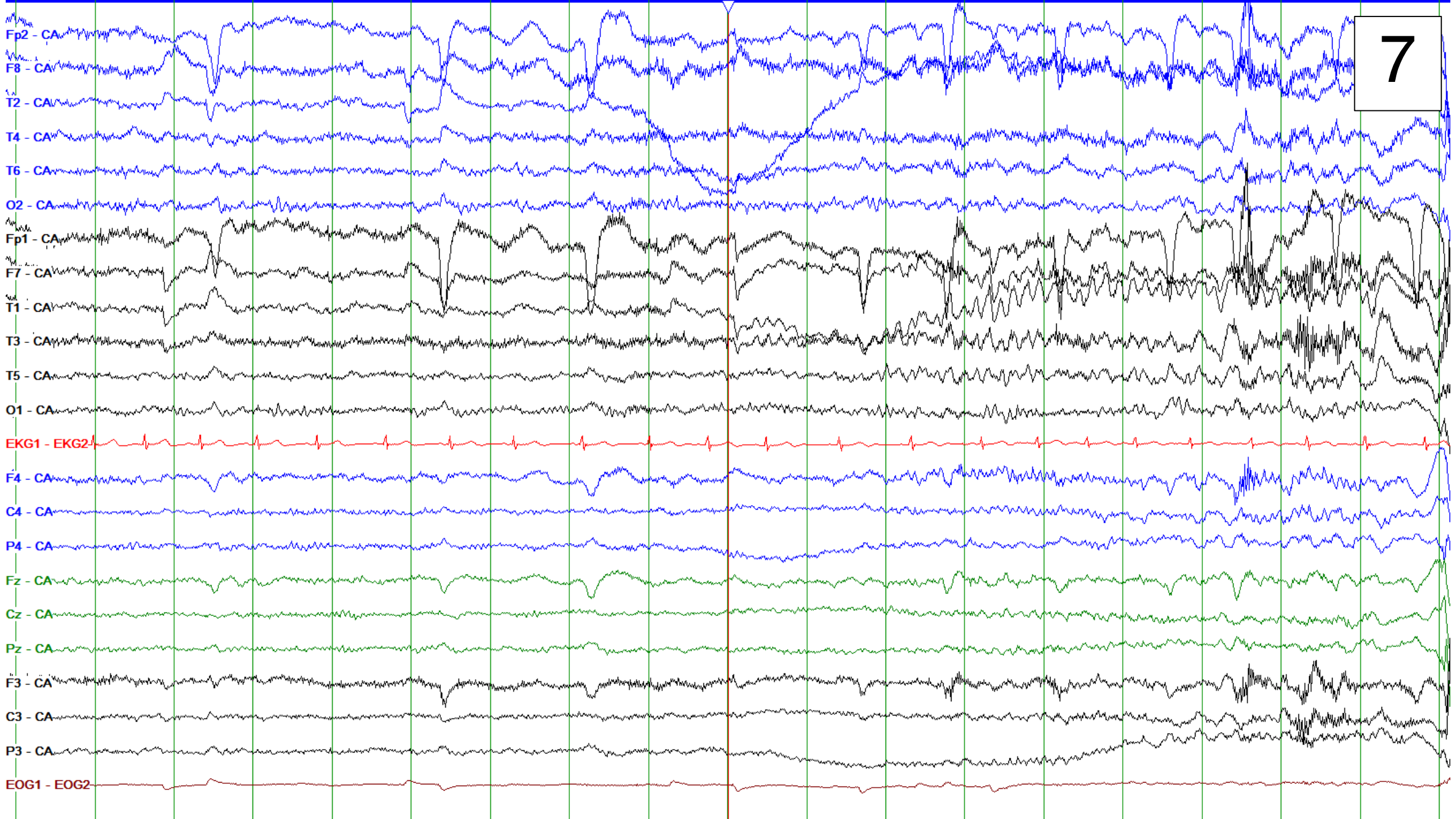
5

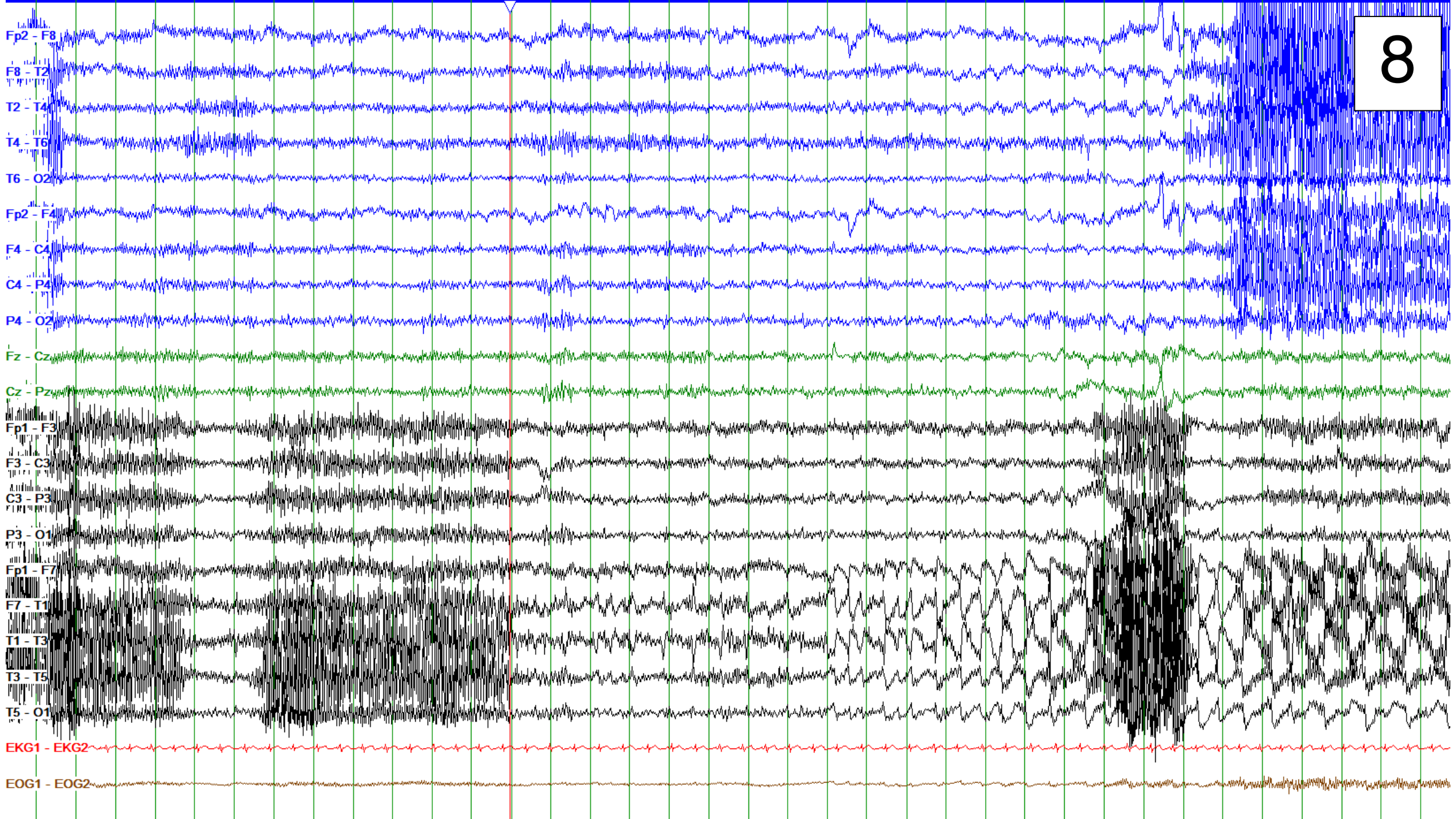


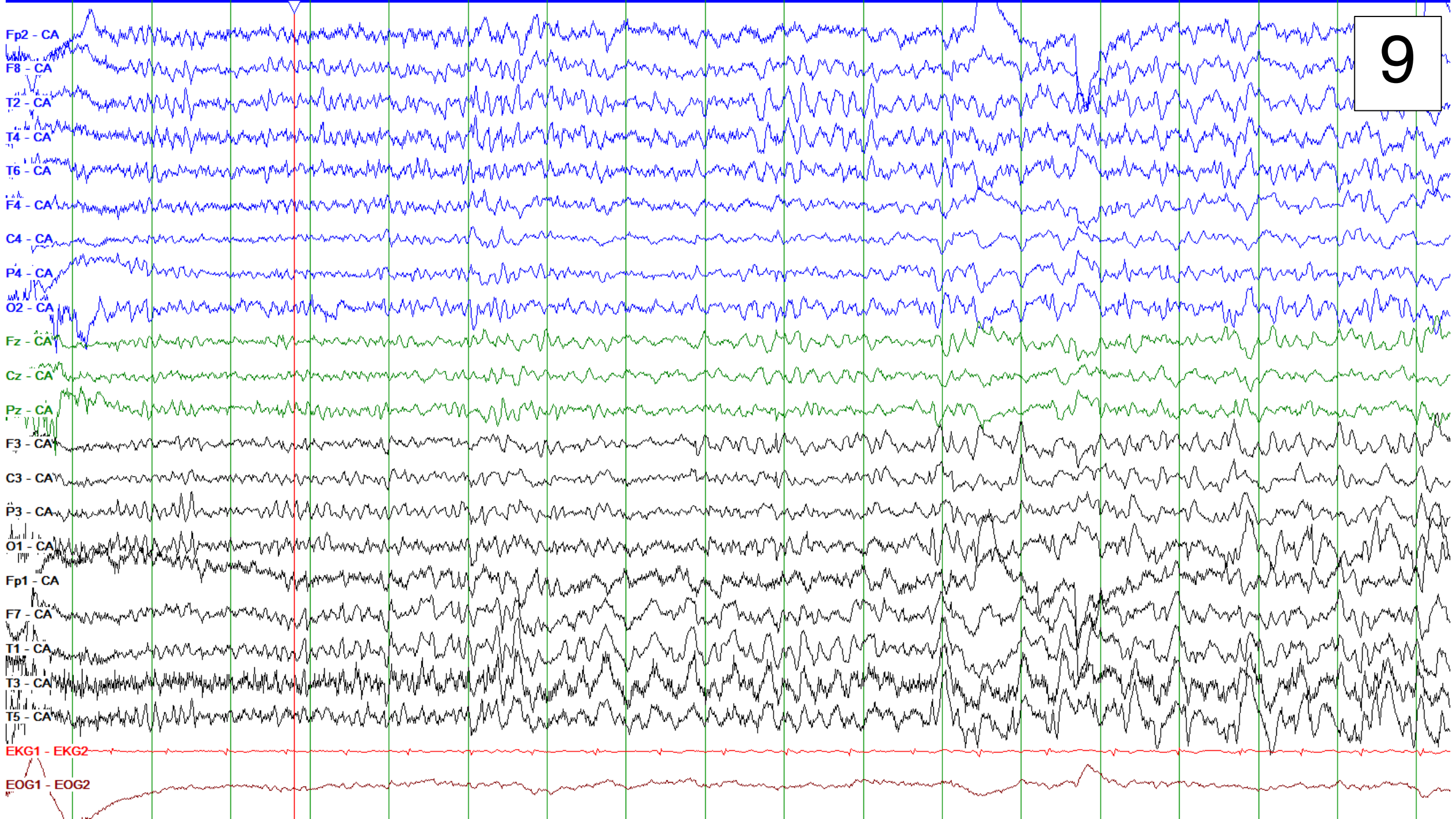




7







10



