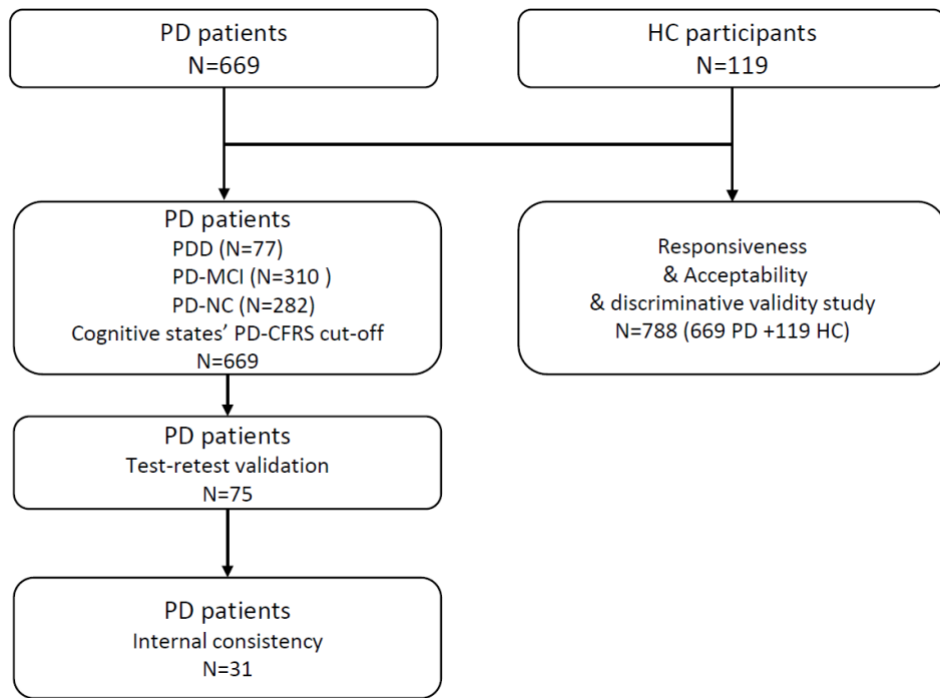
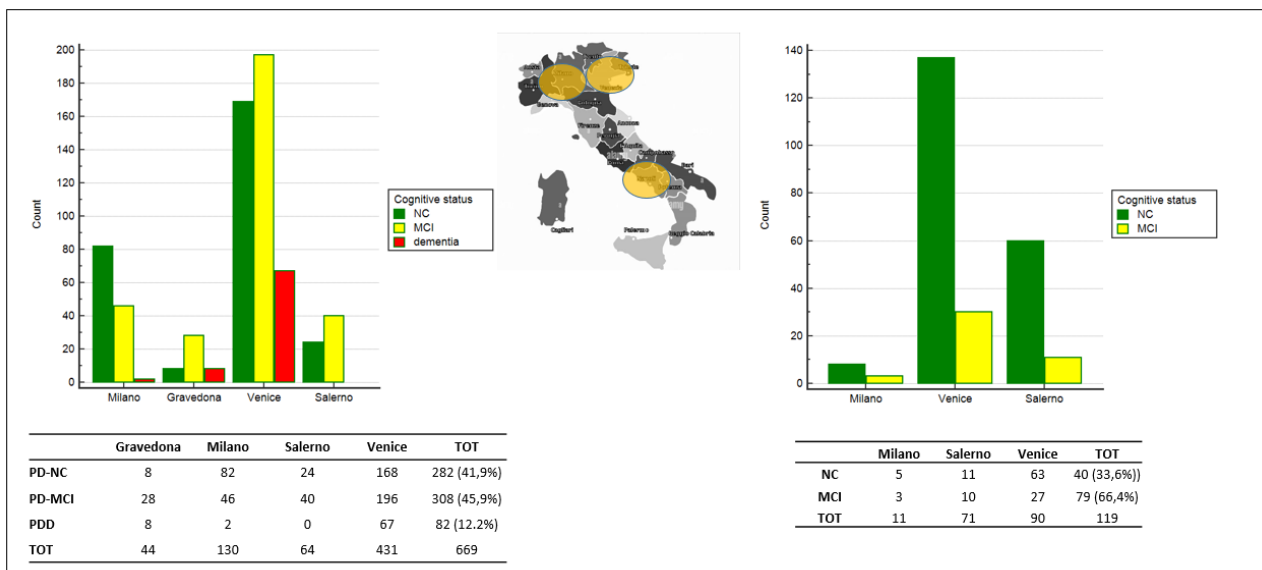


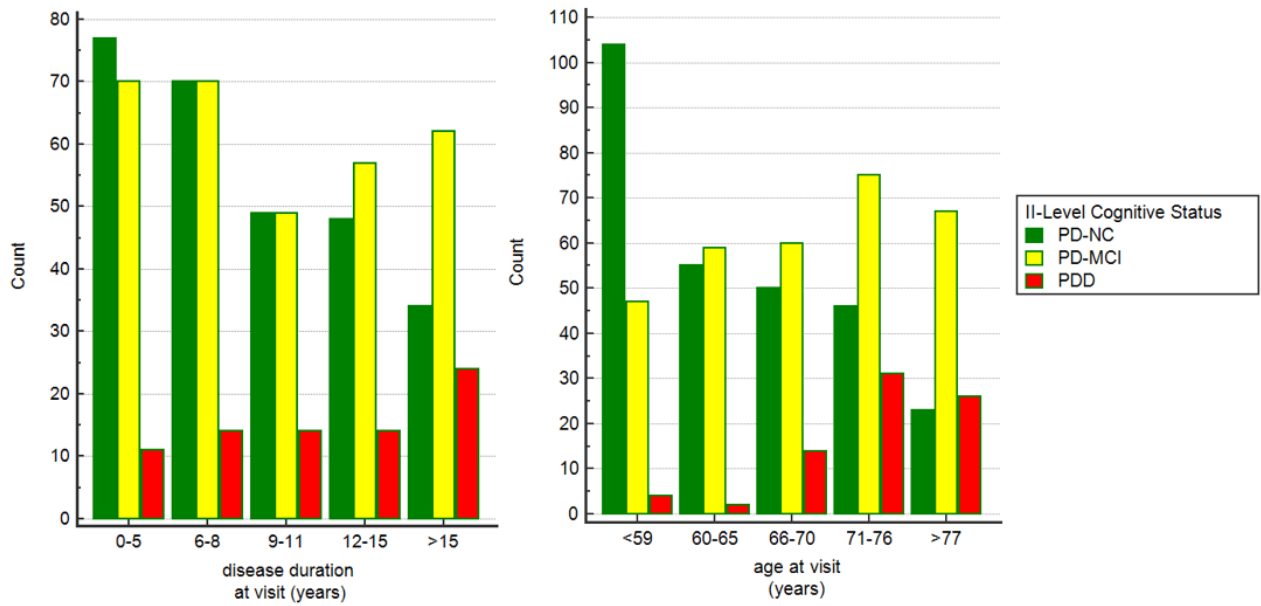
e-Figure 1. Study Flow diagram



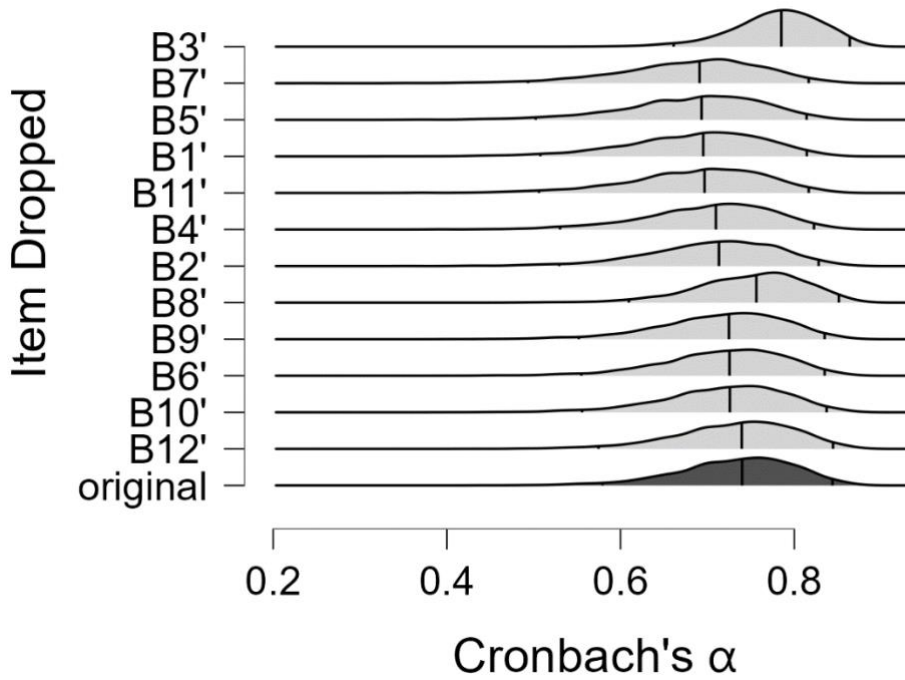
e-Figure 2. Participant recruitment distribution.



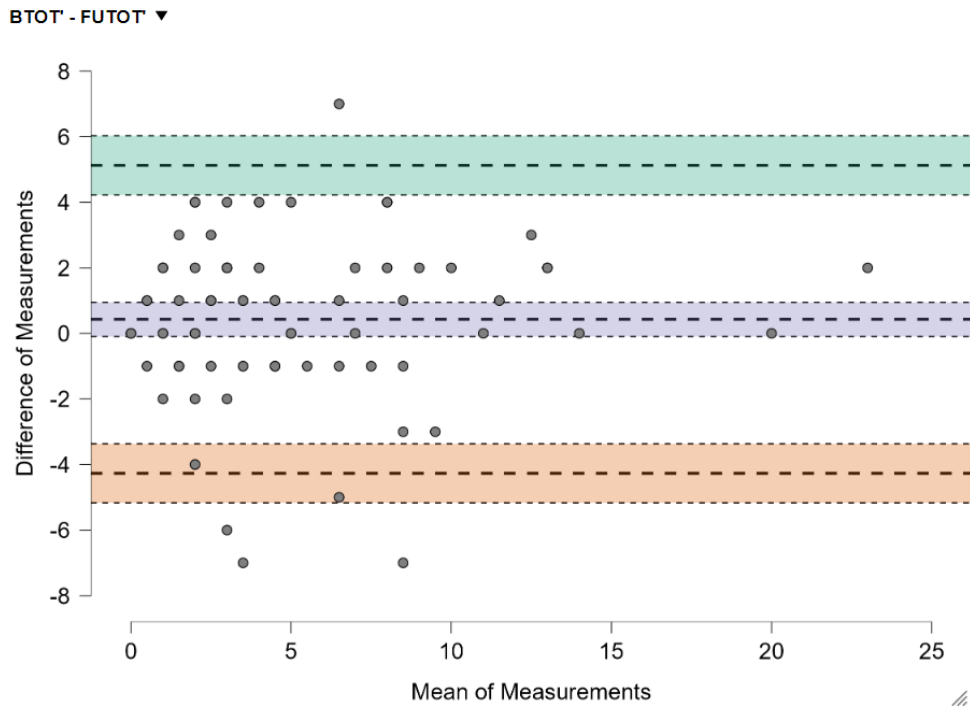
e-Figure 3. Cognitive state distribution among disease duration and age in patients with Parkinson's Disease



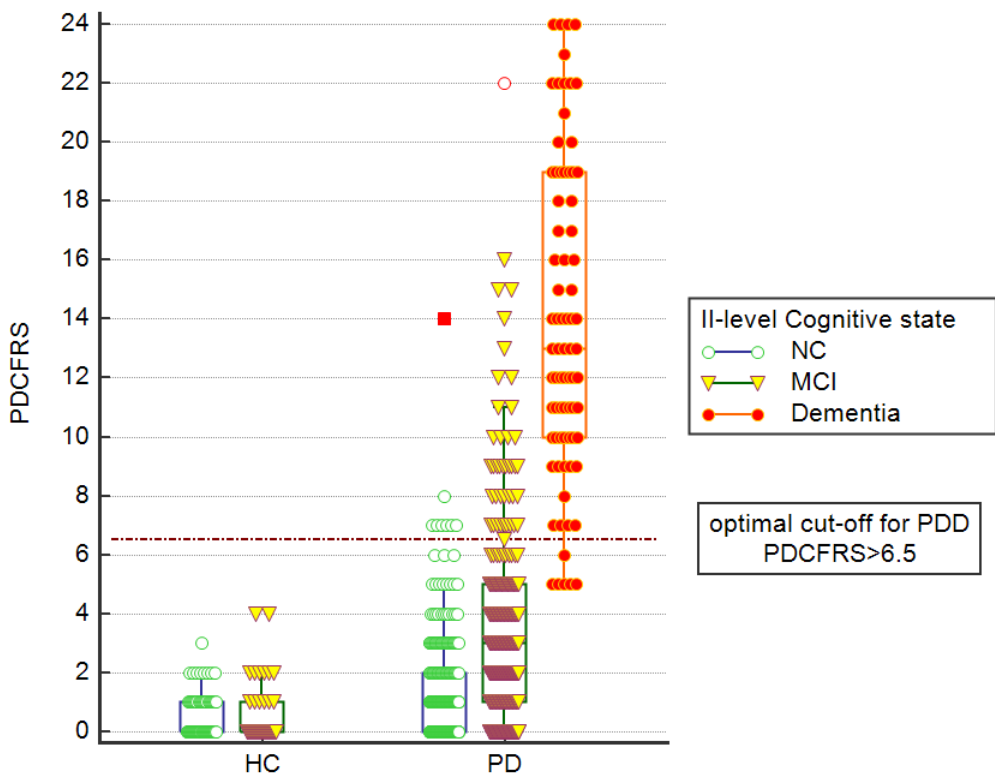
e-Figure 4. Italian version of Parkinson's Disease Cognitive Functional Rating Scale. Cronbach's  $\alpha$  If Item Dropped Posterior Plots.



e-Figure 5. Italian version of Parkinson’s Disease Cognitive Functional Rating Scale test –retest reliability in PD population: Bland Altman Plot.



e Figure 6. Discriminant cut-off for detecting functional impairment associated to PDD.



e-Table 1 Convergent and concurrent validity of the Italian version of Parkinson's Disease Cognitive Functional Rating Scale

	Overall PD	
	PDCFRS score	
	N=669	
	Correlation	P value
	Coefficient [r]	
<i>Convergent Validity</i>		
Age at visit	0,264	<0,0001
Age at motor onset	0,129	0,0009
Education	-0,212	<0,0001
LEED	-0,017	0,675
DAED	-0,136	0,0075
H&Y (ON)	0,465	<0,0001
MDS-UPDRS-I	0,43	<0,0001
MDS-UPDRS-II	0,483	<0,0001
MDS-UPDRS-III	0,463	<0,0001
MDS-UPDRS-IV	0,096	0,1019
MMSE (corrected score)	-0,442	<0,0001
MoCA (corrected score)	-0,474	<0,0001
STAI-Y1	0,283	<0,0001
STAI-Y2	0,333	<0,0001
APATHY scale	0,473	<0,0001
BDI-II	0,376	<0,0001
BIS-11	0,418	<0,0001
<i>Concurrent Validity</i>		
IADL (females)	-0,496	<0,0001
IADL (males)	-0,645	<0,0001